

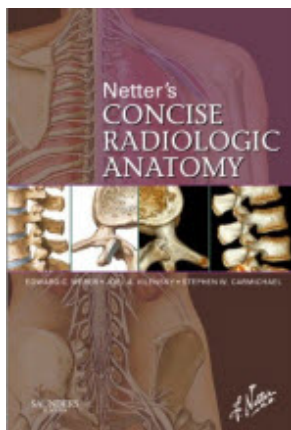
Sladen Library News

Welcome to the Sladen Library Newsletter

The Sladen Library at Henry Ford Hospital is the information resource for our doctors, nurses, students, employees, and patients. At the Library, we know how important it is for our users to stay on top of current medical information and the ever-changing array of information resources. This bi-monthly newsletter is intended to keep users keyed into the latest developments in library services and materials, as well as providing tips and advice on how to search effectively and efficiently.

As always, the Sladen Library staff is here to help you! Feel free to call or come up to K-17 with your questions. You can also visit our robust website 24 hours a day, 7 days a week at www.henryfordconnect.com/sladen.

Check Out These New Books



The library recently added **Netter's Concise Radiologic Anatomy** (2009), to the circulating collection. Additional new titles include:

Infectious Diseases: Atlas, Cases, Text. McGraw-Hill, 2008

MKSAP for Students 4. American College of Physicians, 2008

Inside the Physician Mind: Finding Common Ground with Doctors. Health Administration Press, 2008

We are continually adding to our collection. For a complete list of recently acquired materials visit the "New Materials" section on the library's homepage, or click [here](#).



SLADEN LIBRARY

Included In This Issue:

New Books	1
Resolving PubMed Error	2
Search Tips: My NCBI	3
From the Lam Archives	4

Sladen Library
Henry Ford Hospital
2799 W. Grand Blvd, K-17
Detroit, MI 48202
313-916-2550

www.henryfordconnect.com/sladen
sladen@sladen.hfhs.org

Hours:
8:30-7:30 Monday -Thursday
8:30-5:00 Friday

New eBooks

The Stat!Ref database has added several new electronic textbooks, including:

- Current Diagnosis and Treatment in Pediatrics, 19th ed., 2009
- Davis Drug Guide for Nurses, 11th ed., 2009
- Handbook on Injectable Drugs, 15th ed., 2009
- ICD-9-CM – Volumes 1, 2 & 3, 2009

You can access Stat!Ref from the "Quick Links" menu on the Sladen Library web site, or by clicking [here](#).

Coming Soon...

ILLiad, A Better Way to Order Books and Articles

The Sladen Library plans to implement ILLiad, a new Document Services system soon. This system will enable our users to request items through interlibrary loan using a Web-based form. In addition, ILLiad enables the staff of the library to process those requests in a paperless environment. At any time, a requester can review the status of their requests in process, cancel requests online, renew outstanding loans, and review all past requests.

Watch for further announcements!

Resolving Pubmed "Errors on Page"

Users of PubMed have been reporting the occasional problem of being unable to complete searches. Typically, PubMed opens normally, but when a term is typed into the search box and "go" is clicked - nothing happens. The user gets an error message in the bottom status bar of "Done, but with errors on page." Although we do not know the cause of this problem, and are working with Information Technology to resolve it, we do have a workaround that helps about 80 percent of the time.

If this happens to you while using Internet Explorer 6:

Click on **Tools** → **Internet Options**

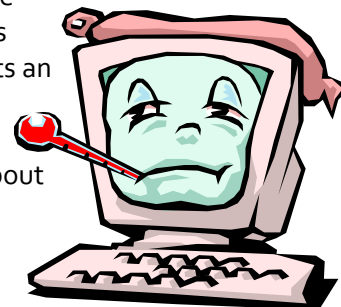
From the **General tab** → click the **Delete Files** button (make sure you click the box to remove offline content)

From Internet Explorer 7:

Click on **Tools** → **Internet Options**

From the **General Tab** → Under **Browsing History** → click the **Delete** button → then under **Temporary Internet Files** → click **Delete Files**

You then click **OK** and wait for the files to be deleted. Click **OK** to close the Internet Options box. You must then exit all IE sessions you might have opened, restart IE, go back to PubMed and retry the search. If this does not work for you, please call the library at 313-916-2550 and ask for John DuLong or Joseph Escribano and we will help troubleshoot the problem with you.



Search Tips & Tricks: PubMed *My NCBI*

With PubMed's *My NCBI* tool, you can save searches and citations, set up automatic email updates to receive new citations on a topic, and customize the PubMed results screen to best meet your needs. *My NCBI* is a great way to stay up-to-date with the literature and be more effective in your searching. Best of all, it's free and easy to set up!

Registering for *My NCBI*:

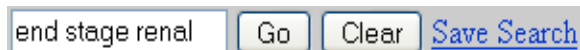


The *My NCBI* box is located in the upper right corner of PubMed. Simply click "**Register**," and follow the instructions. You will be asked to create a user name and password, and to provide an email address should you choose. This is the only information about you the site collects. Once registered, "Welcome *user name*" will appear in the box.



Saving Searches and Creating Automatic Email Updates:

1. Run your search in PubMed
2. Click on "**Save Search**," located next to the search box



3. A new window will open up. Sign in (if necessary), change the name of the search if desired and click **SAVE**.
4. Another window will open. Follow the instructions for setting up an email update. You will be asked how often you'd like to receive the updates (e.g. daily, weekly), your email preferences, and if you'd like to add a message to the email.

Questions? Contact Sladen Library at 313-916-2550, and one of our librarians will be happy to help you!

Check our next issue for more tips on customizing PubMed with *My NCBI*.

Google Tools – Tracking Flu Outbreaks

A new tool from Google called **Google Flu Trends** estimates the number of flu outbreaks in a given US region based on the number of search queries performed on "flu" or associated terms originating from that region. When compared to CDC data of actual outbreaks, Google Flu Trends is shown to be comparably accurate and provides information 2 weeks faster than the CDC.

To explore Google Flu Trends visit: <http://www.google.org/flutrends>

BMJ Moves to Continuous Publication

You may find citing and locating an article from *BMJ* a little different from now on. *BMJ* is the first major medical journal to move to the continuous publication model. Several times a day *BMJ* publishes articles online at bmj.com, as soon as they become available. Select articles are then chosen for the print version of the journal, but a large amount of *BMJ* content remains available only online. The publisher believes this model benefits both readers and authors by providing faster publication and flexibility in how content is accessed.

One significant effect of the continuous publication model is how articles from *BMJ* are now cited. Traditionally, articles had a volume, issue, and page number corresponding to the print version of the journal. Now, all citations for *BMJ* articles will have a year, volume, and e-locator, as in the example below:

Maternal caffeine intake during pregnancy and risk of fetal growth restriction: a large prospective observational study. CARE Study Group. *BMJ* 2008;337:a2332

This new form of citation appears in both the print and online version, and it will be what authors need to use when citing an article.

From the Conrad R. Lam Archives



Dr. Joseph L. Ponka carving the holiday turkey at the Henry Ford Hospital operating room Christmas party held on December 22, 1965. Dr. Ponka was well known as a surgeon, teacher, and author at the hospital from 1942-1993. His personal interest in the staff was noted in the creation of the Joseph L. Ponka Caring Physician Award in 1990.